

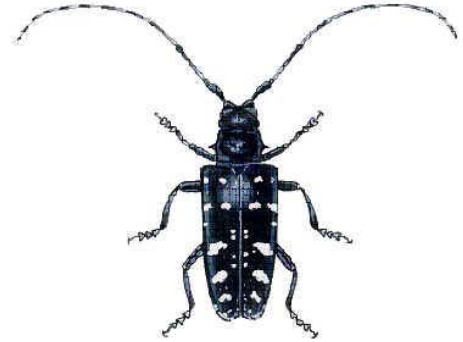
Asian Long-horned Beetle

The Asian Long-horned beetle attacks and kills healthy hardwood trees, particularly maple trees. It has been sighted as far north as Vaughan. There have been no sightings in Simcoe County yet.

The beetle has a shiny black body (2-3.5cm) with white spots and long antennae with black and white bands.

Signs of attack on trees include:

- ◆ Exit holes in bark, 1 cm across
- ◆ Oval wounds on bark leaking sap, created by egg-laying
- ◆ Sawdust on branches or tree base from larvae feeding inside.



Affected hardwoods are maple, poplar, willow, birch, elm, ash and horse chestnut.

In an effort to stop the spread of this beetle, City Council, along with its Environmental Advisory Committee, asks citizens to report any sightings of this beetle to the Canadian Food Inspection Agency at 1-800-442-2342.

Bob Bowles, a local member of the Environmental Advisory Committee, can be contacted at 325-3149 to help with identification of the beetle.

Additional information on the Asian Long-horned beetle can be found at the Canadian Food Inspection Agency website: www.inspection.gc.ca